

Historic, Archive Document

Do not assume content reflects current scientific knowledge, policies, or practices.

62.43

LIBRARY
RECEIVED

★ SEP 24 1947 ★

U.S. DEPARTMENT OF AGRICULTURE



FALL 1947

SPRING 1948

PITZONKA'S High-Quality PANSIES

*Cut-Flower
Mixture . . .*

This mixture was developed from the famous Swiss Giant Pansies and is kept up to Pitzonka ideals by selecting for seed the plants that bear the longest-stemmed flowers. The plants must be sturdy, with stems at least 6 inches long and heavy enough to hold up; the flowers must have substance and must be fragrant. Fifty per cent of the flowers must be in shades of red, with various variegated colors making up the remainder.

Regular Size Plants, \$2.75 per 100, \$20.00 per 1000 Large Size Plants, \$3.50 per 100, \$30.00 per 1000
250 plants or more of one size at the 1000 rate

PITZONKA'S PANSY FARM · Bristol, Penna.

PITZONKA'S

High-Quality

PANSIES

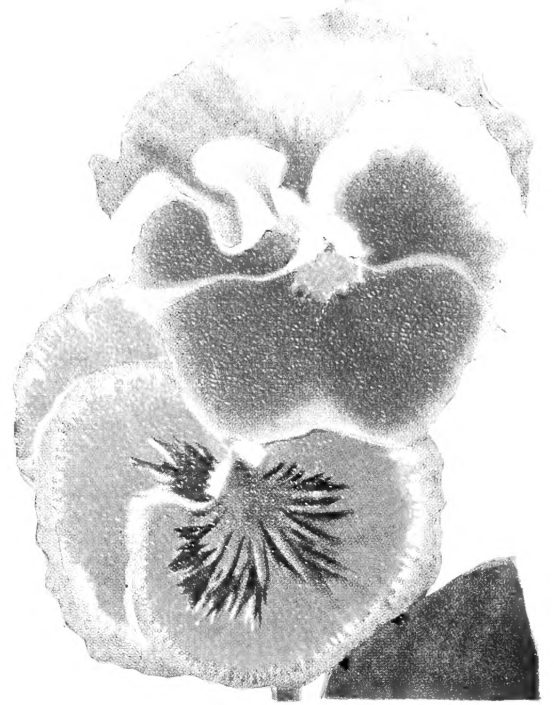
PANSIES are among those intimate flowers that everyone loves. They come early in the spring, but unlike the spring-flowering bulbs they can be kept in bloom through the warm weather if properly cared for.

There are many places around a garden where Pansies may be planted. They make splendid spring borders and they combine well with narcissus, hyacinths, and tulips. A solid bed of them can give great pleasure all summer. As window-box material Pansies are good companions for any annuals. Wherever planted, they require a rich soil and adequate moisture.

As material for bouquets Pansies are very adaptable. A handful of them in a bowl is charming on a breakfast tray or in a sickroom, and they also may be used with other spring flowers.

PITZONKA'S
Pansy Farm
BRISTOL, PENNA.

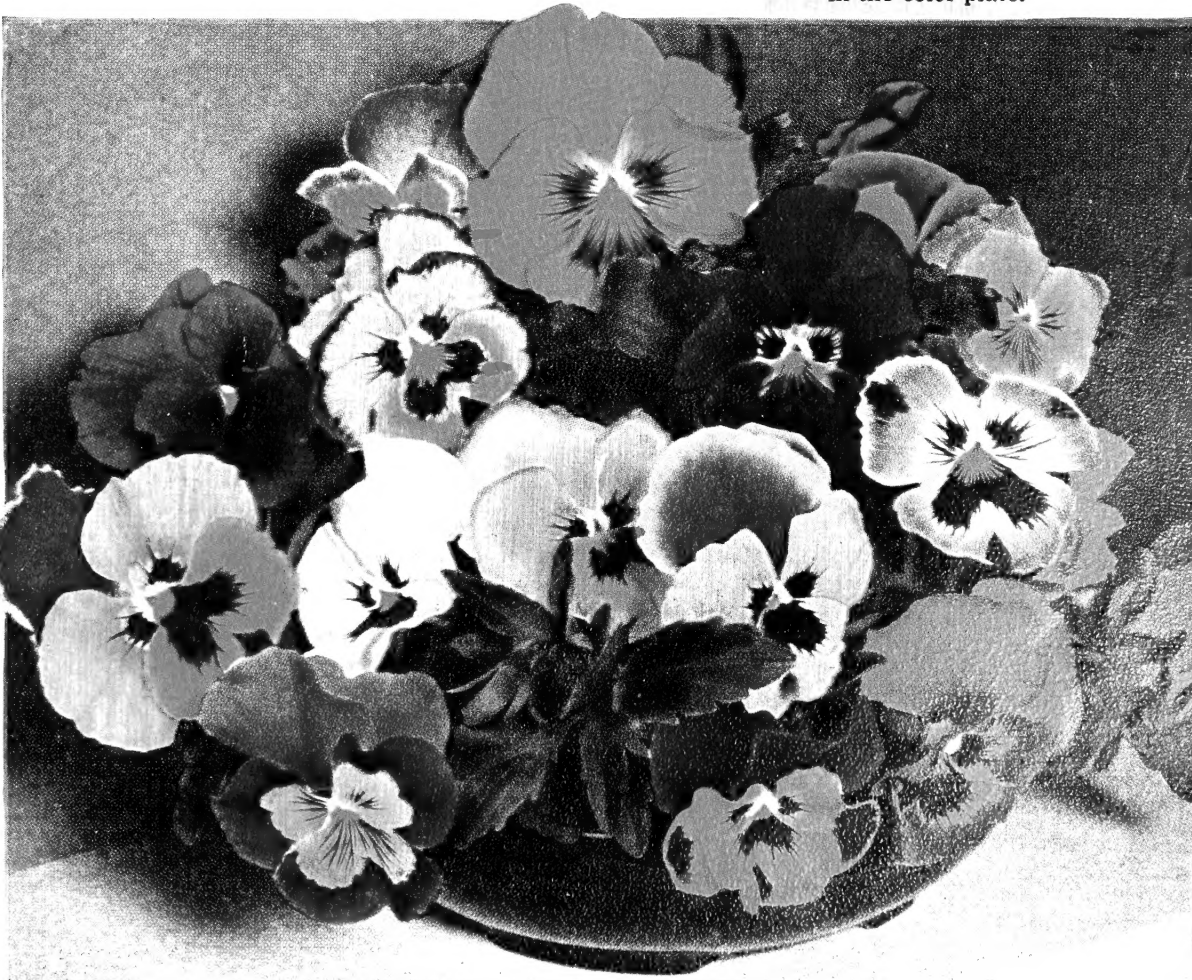




PITZONKA'S *Giant-Flowering* Mixture of PANSY PLANTS

It would be interesting to know how many Pansy plants have been thrown away in the nearly half century we have been roguing this mixture! New blood is added from time to time, whenever we are able to find a superior newcomer that will fit in with our requirements.

The result is a well-balanced mixture producing strong, healthy plants that furnish giant flowers in a color range from delicate orchid and yellow to purple, blue and red. At least 75 per cent of these should resemble the striking variegated types shown in the color plate.



REGULAR SIZE PLANTS

\$1.75 per 100
\$12.50 per 1000
5000 or more at \$11 per
1000

LARGE SIZE PLANTS

\$2.50 per 100
\$17.50 per 1000
250 plants or more of one
size at the 1000 rate

SIMPLE SUGGESTIONS FOR GROWING PANSIES

1. Choose a well-drained, sunny location (part shade is no obstacle).
2. Cover the entire bed with at least an inch of well-rotted stable manure or some pulverized sheep or cow manure. Turn under to a depth of 6 to 8 inches and let it stand several weeks before setting out the plants.
3. Apply commercial fertilizer according to manufacturer's directions. Pulverize the soil to a depth of 6 inches. Set the plants about 6 inches apart, as deep as they were in the nursery. Water well; shade in mid-day until well rooted.
4. Cover with a light hay or straw mulch after the ground freezes.
5. Give another application of commercial fertilizer, according to directions, when growing weather starts in the spring.

PITZONKA'S PANSY FARM BRISTOL, PENNA.

NAMED VARIETIES

When a particular color scheme is desired, it is best to plant named varieties. In this way some delightful color combinations may be worked out.

ALPENGLOW. Shades of cardinal-red, with dark blotches. Very outstanding and highly recommended.

BLUE BOY. Clear, pure silvery lilac. A bed of this variety gives a striking effect.

GIANT BRONZE. Beautiful shades of bronze. A variety that appeals to everyone.

GIANT LAVENDER. A pleasing shade of lavender with slight variations and a dark eye.

GIANT LUNA. Sulphur-yellow. In habit of growth and size of flower this is similar to Coronation Gold, the only difference being in the color.

GIANT RED. Careful selection has resulted in nice large flowers in shades of red.

GIANT WHITE. The largest and finest pure white Pansy.

GOLDEN YELLOW. Rich yellow with a large brown eye.

LAKE OF THUN. Also known as Ullswater. A splendid true ultramarine-blue in color. The most beautiful of all blue varieties and excellent when used with Yellow Master.

VIOLET JEWEL. A large-flowering type of rich purple.

YELLOW MASTER. A pure golden yellow that can be used in almost any color combination. One of our most popular named varieties.

SUPER MAPLE LEAF GIANTS. Large, velvety flowers 4 inches in diameter, in many variegations. Thick, attractive foliage and good stems add to the desirability of this mixture for cutting.

PRICES OF ANY OF THE ABOVE PANSIES:

Regular size plants 75c for 25, \$2.75 per 100, \$20.00 per 1000

Large size plants, \$1.00 for 25, \$3.50 per 100, \$30.00 per 1000

250 plants, or more, of one color and size at the 1000 rate

COPPER LUSTRE. This heavy-petaled Masterpiece seedling is about the richest colored Pansy we have ever seen. The edges of the ruffled petals are brownish burgundy, while the large blotches are dark seal-brown. The long-stemmed blooms are spicily fragrant.

CORONATION GOLD. Shapely blooms, irregularly round, with the edges of the petals daintily crinkled. Stems of good length and a spicy fragrance make it desirable for cutting. Vigorous, healthy plants hold the flowers erect.

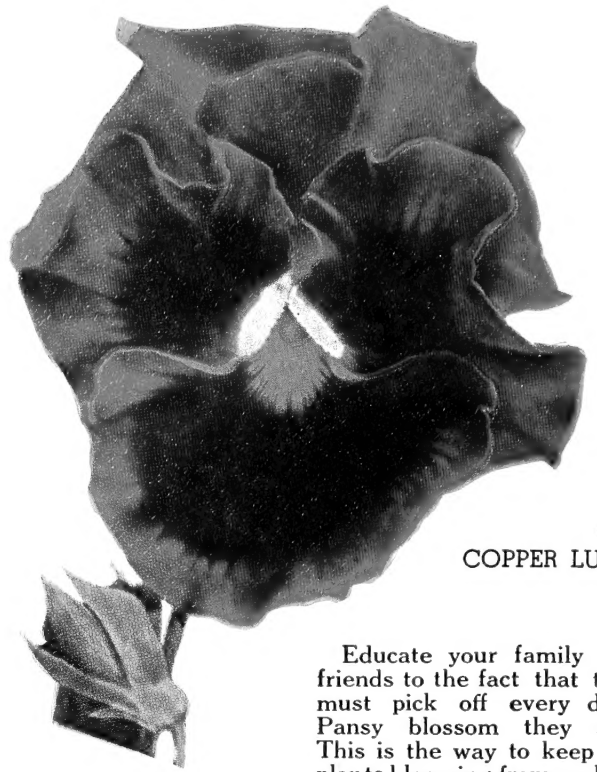
PINK SHADES. A fine new addition to the group of named varieties. Flowers of heavy texture in beautiful shades of pink with large dark blotches in the center.

EITHER OF THE ABOVE VARIETIES:

Regular size plants, 90c for 25, \$3.00 per 100, \$25.00 per 1000

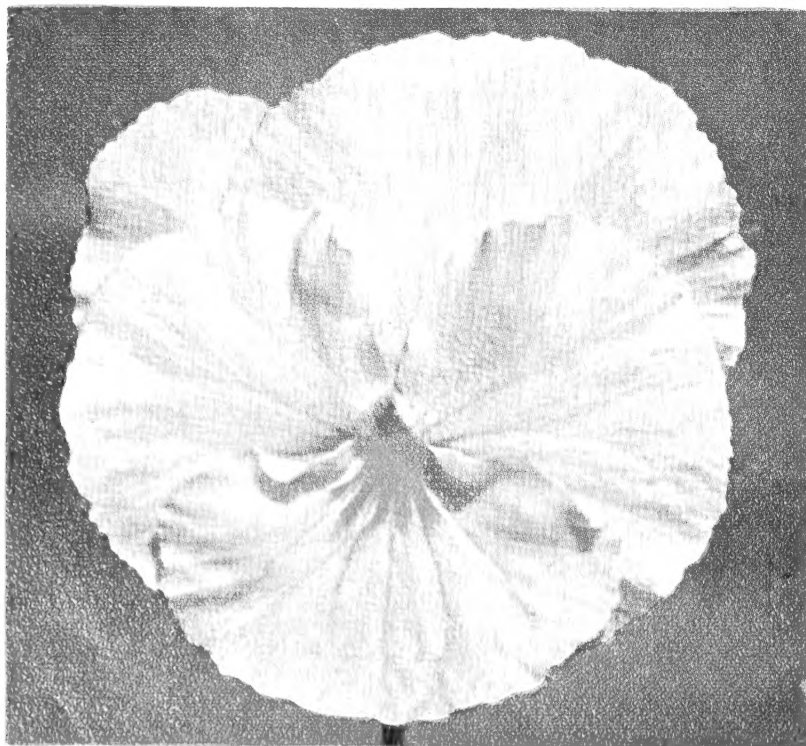
Large size plants, \$1.25 for 25, \$4.00 per 100, \$35.00 per 1000

250 plants, or more, of one color and size at the 1000 rate



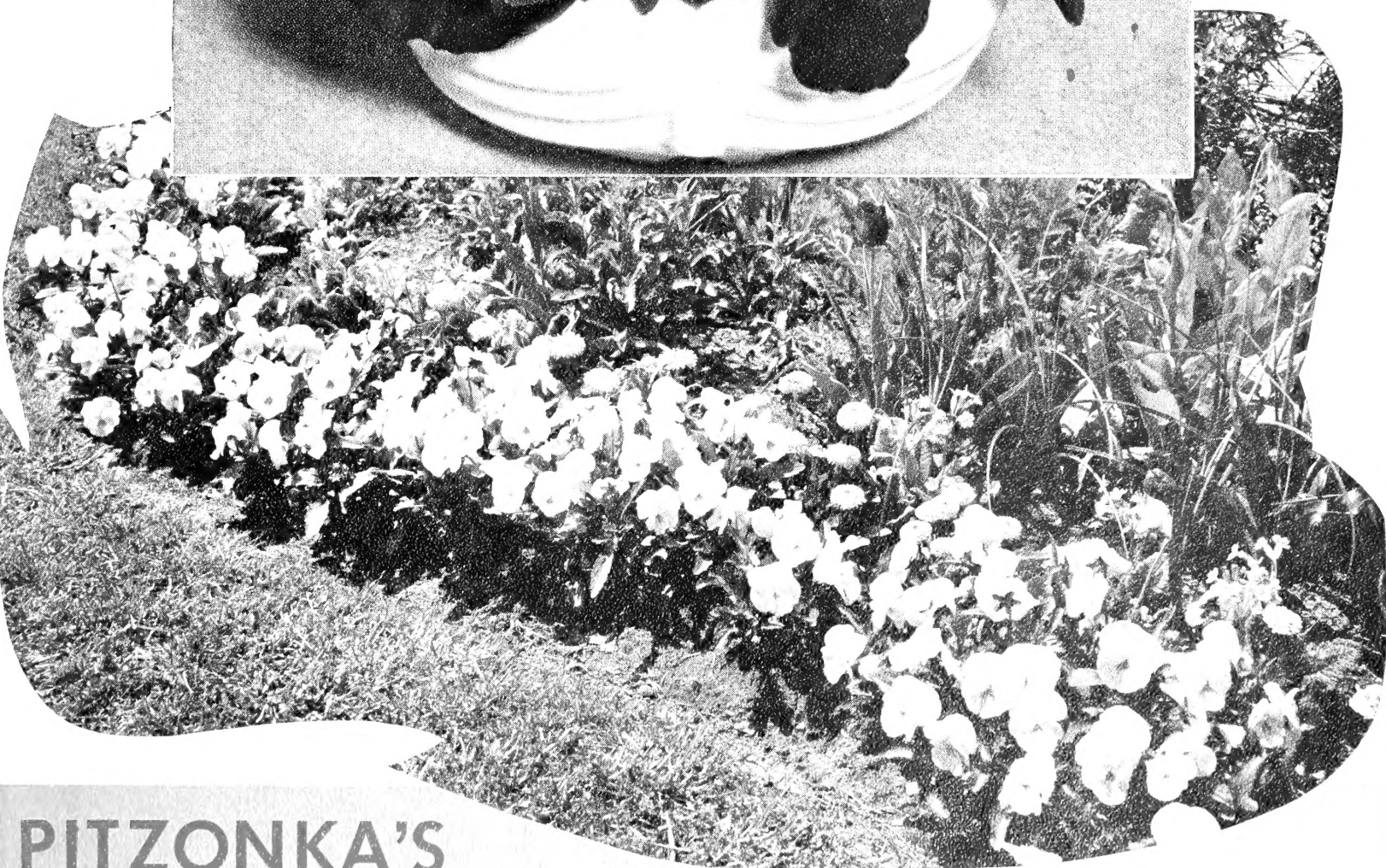
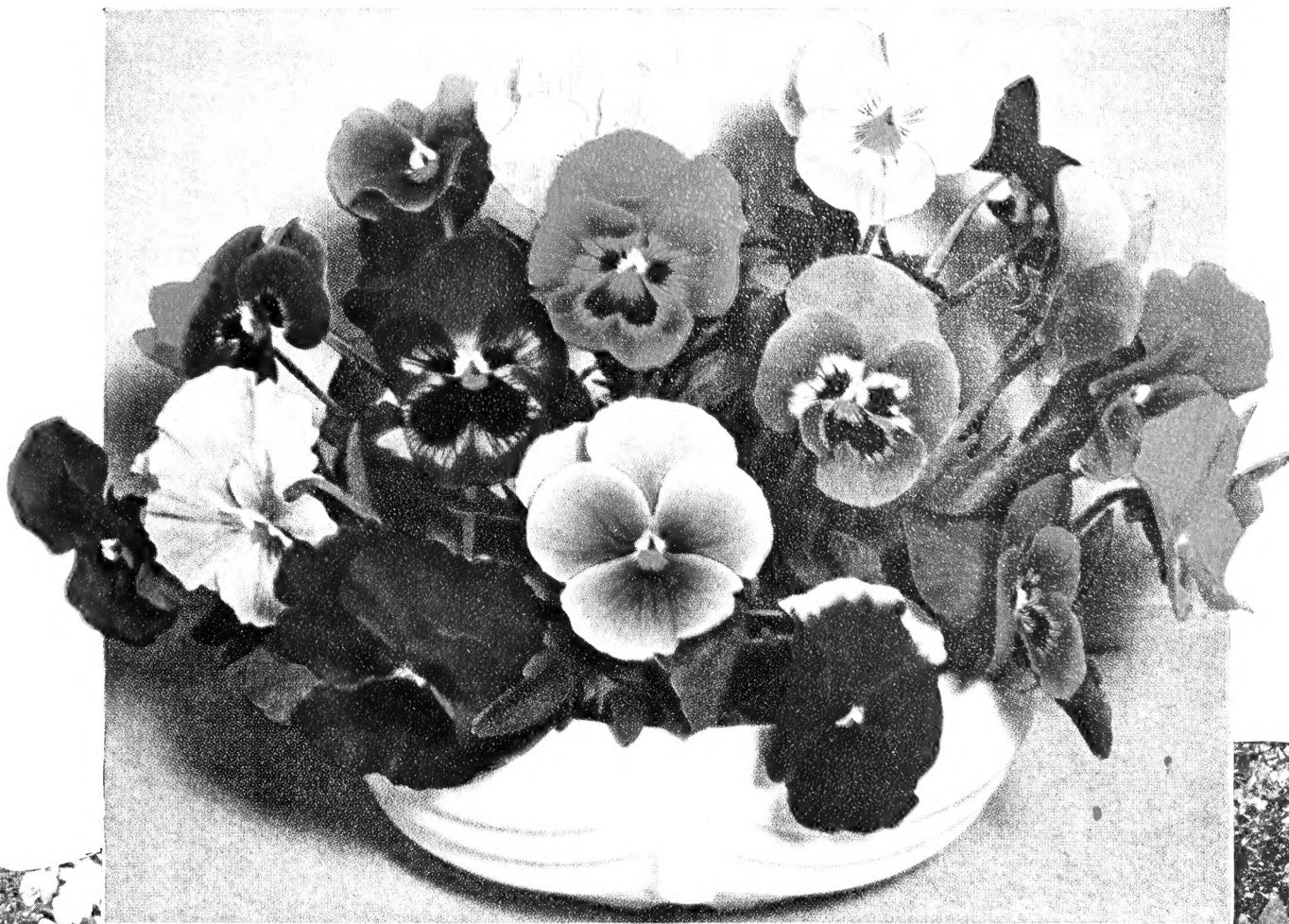
COPPER LUSTRE

Educate your family and friends to the fact that they must pick off every dead Pansy blossom they see. This is the way to keep the plants blooming from earliest spring through the hot weather.



GIANT WHITE

PITZONKA'S PANSY FARM
BRISTOL, PENNA.



PITZONKA'S
Prize Mixture
PANSY
PLANTS

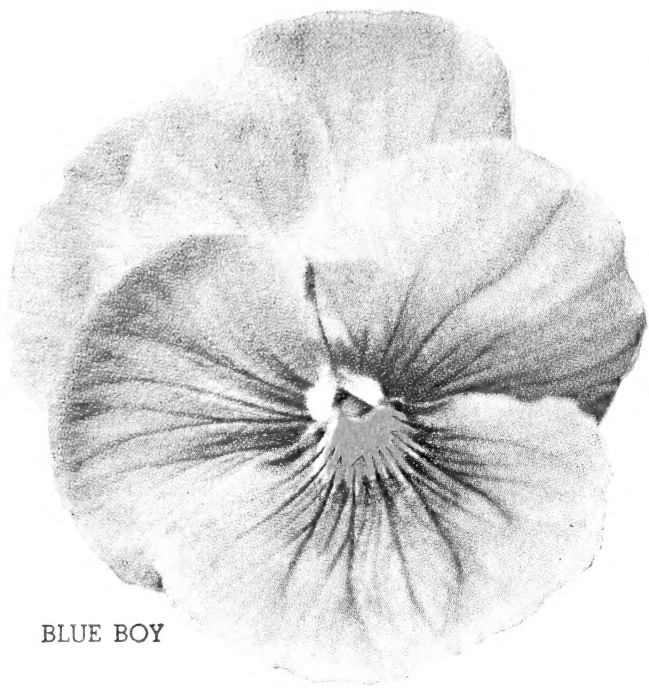
Beds of mixed colors are best produced by planting a mixture rather than several separate named varieties. This Prize Mixture is a prize collection of all the colors that can be bought separately plus many more—warm tones of red, pink, brown, yellow, lavender, blue and black that hold up well all summer. Included is a large proportion of solid colors and unusual markings. We are proud of this mixture because it is the result of watchfulness on our part in removing every plant bearing flowers that do not come up to specifications.

Regular size plants
\$2.75 per 100
\$20.00 per 1000

Large size plants
\$3.50 per 100
\$30.00 per 1000

250 plants or more of one size at the 1000 rate

Pansies in Masses



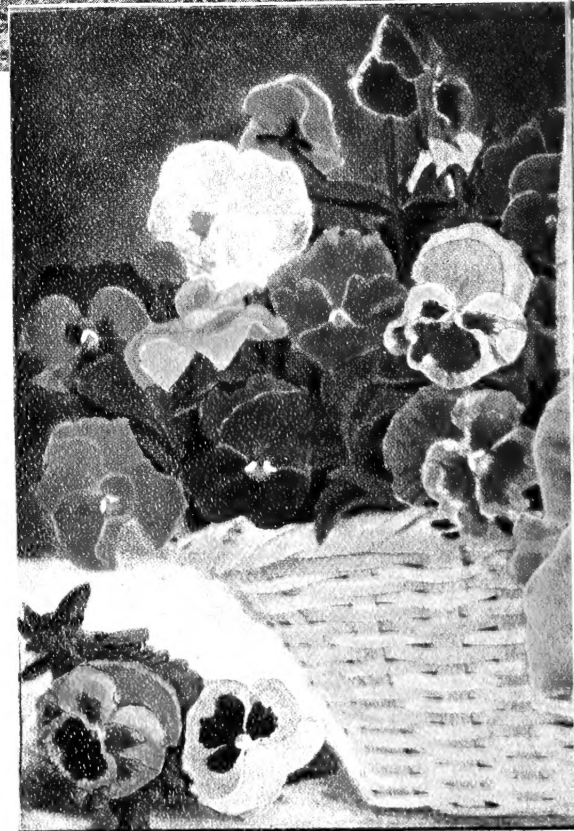
BLUE BOY



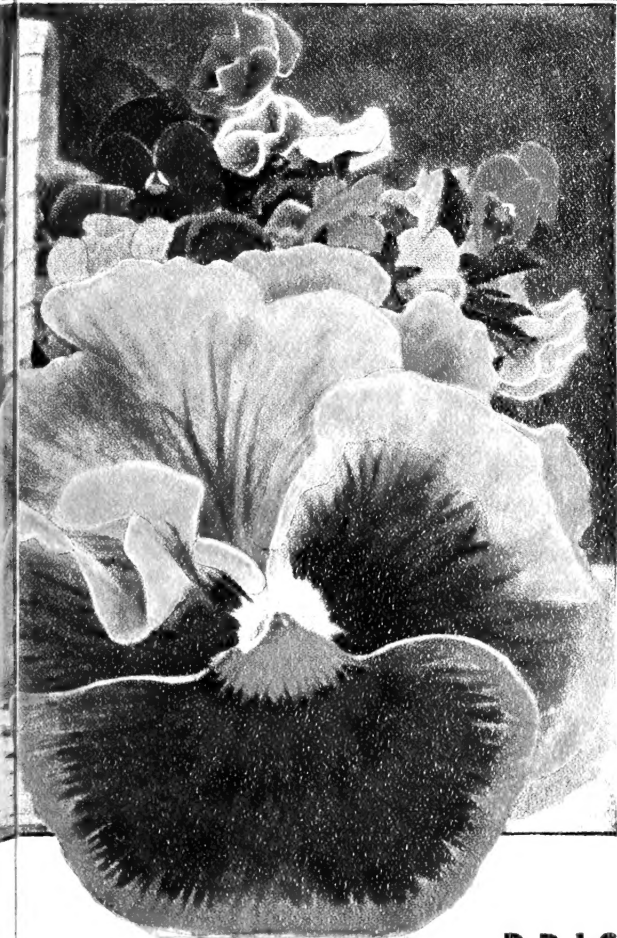
CORONATION GOLD



LAKE OF THUN



Make a Lovely Sight!



BRISTOL, PENNA.



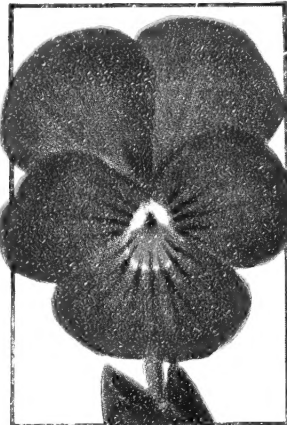
ADMIRATION



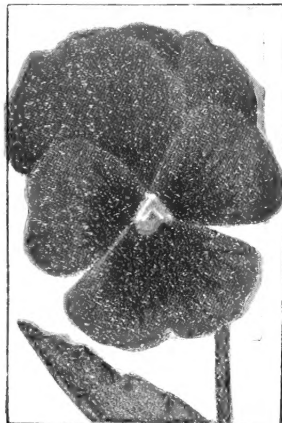
WHITE PERFECTION



CHANTREYLAND



BLUE PERFECTION



ARKWRIGHT RUBY

Violas . . .

Miniature members of the Pansy family. Invaluable in the rock garden, where they come up year after year, since they are self-sowing. Between stepping-stones and in wall pockets they are very useful.

Admiration. Deep violet.

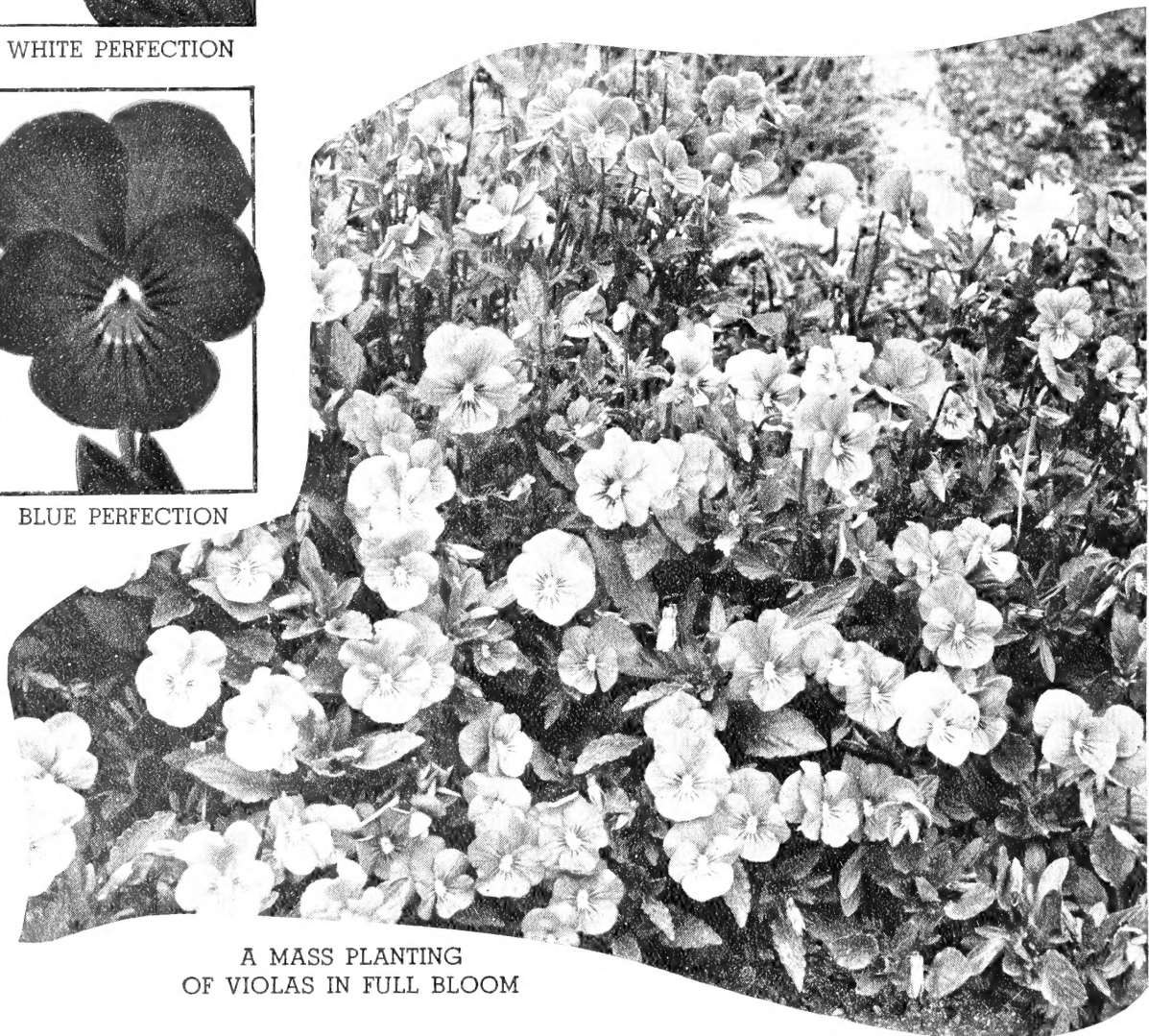
Blue Perfection. Light blue with yellow eye.

White Perfection. Clear white.

Johnny-Jump-Up. Combinations of purple, blue and yellow.

Lutea Splendens. Bright clear yellow.

**ANY OF THE ABOVE: 25 for 75c, \$2.40 per 100, \$18.00 per 1000
250 plants of one variety at the 1000 rate**



A MASS PLANTING OF VIOLAS IN FULL BLOOM

Arkwright Ruby. Bright rosy crimson Chantreyland. Rich apricot, shaded terra-cotta.

**EITHER OF ABOVE: 25 for 90c, \$3.00 per 100, \$25.00 per 1000
250 plants of one variety at the 1000 rate**

**PITZONKA'S PANSY FARM
BRISTOL, PENNA.**

Pitzonka's BEDDING MIXTURE • VIOLAS



We offer a fine selection of mixed Violas in a great many different varieties. Splendid for a child's garden, for edging perennial borders, or for broad masses in the rock garden. **25 for 75c, \$2.40 per 100, \$18.00 per 1000.**



FORGET-ME-NOT

These compact, bushy little plants covered with masses of flowers are not fussy in their requirements and will readily self-sow. Their dainty blue clustered flowers are a beautiful contrast to spring-flowering bulbs and they belong with pansies and English daisies in the border and odd nooks.

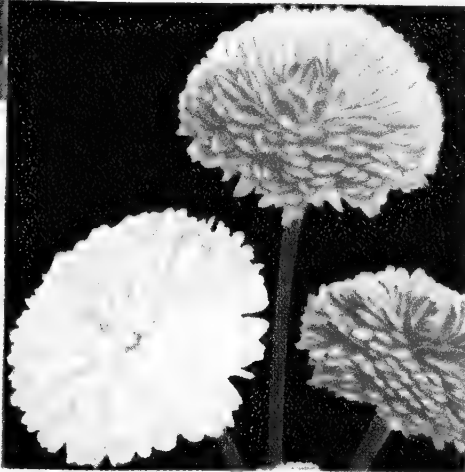
Victoria, Azure-blue. Large clusters of clear blue. Bushy plant 6 inches tall.

Victoria, Indigo-Blue. Deep indigo-blue.

Either of the above

**50 for \$1.25, \$2.00 per 100,
\$15.00 per 1000**

**250 plants of one color
at the 1000 rate**



ENGLISH DAISIES

ENGLISH DAISIES

For irregular masses, borders, under shrubs, and among spring bulbs.

Crispa, Cherry. A compact button type; bright cherry-red.

Monstrosa. Large; double. Rose, white, red, and mixed colors.

Monstrosa Tubulosa, Etna. Quilled flowers of beautiful dark red.

**Any of above: 50 for \$1.00
\$1.75 per 100, \$12.50 per 1000**

**250 plants of one variety
at the 1000 rate**

Super Giant. Double flowers 2 inches across. Red, rose, and white. New.

**50 for \$1.25, \$2.00 per 100, \$15.00
per 1000.**

Pansy Seed

	Pkt. (½ oz.)	¼ oz.
Pitzonka's Giant-flowering Mixture.....	\$0 75	\$1 25
Pitzonka's Cut-flower Mixture.....	1 25	2 00
Pitzonka's Prize Mixture.....	1 25	2 00
Alpenglow.....	1 00	1 75
Blue Boy.....	1 00	1 75
Giant Bronze.....	1 00	1 75
Giant Lavender.....	1 00	1 75
Giant Luna.....	1 00	1 75
Giant Red.....	1 00	1 75
Giant White.....	1 00	1 75
Golden Yellow.....	1 00	1 75
Lake of Thun.....	1 00	1 75
Violet Jewel.....	1 00	1 75
Yellow Master.....	1 00	1 75
Super Maple Leaf Giants.....	1 25	2 00
Copper Lustre.....	1 25	2 00
Coronation Gold.....	1 25	2 00
Pink Shades.....	1 25	2 00

ENGLISH DAISY SEED

Crispa, Cherry.....	\$0 75	\$1 25
Monstrosa (Rose, white, red or mixed).....	75	1 25
Monstrosa Tubulosa, Etna.....	75	1 25

FORGET-ME-NOT SEED

Victoria, Azure-Blue.....	\$0 75	\$1 25
Victoria, Indigo-Blue.....	75	1 25

VIOLA SEED

Admiration.....	\$0 75	\$1 25
Blue Perfection.....	75	1 25
Johnny-Jump-Up.....	1 00	1 75
Lutea Splendens.....	75	1 25
White Perfection.....	75	1 25
Arkwright Ruby.....	1 00	1 75
Chantreyland.....	1 00	1 75
Bedding Mixture.....	75	1 25

STUDY THESE PICTURES



Both these pictures are much reduced from natural size, but they do tell a real story of Pitzonka's Pansy Plants.

The first picture shows the type, foliage, and the root-growth of our Large Pansy Plants. These Large Plants are a little older than the Regulars, are larger and better developed, and therefore bloom quicker and more freely from the start. The Large Plants are recommended for greenhouse winter blooming.

One of Pitzonka's Regular Size Pansy Plants is pictured in the second illustration. These are younger plants, but are grown under exactly the same conditions and culture as the Large Plants. They will be a little longer in developing but will give just as fine flowers when fully grown. All they need is a little more time.

SEND FOR OUR NEW CATALOG OF HARDY PLANTS

Upon receipt of your request, we shall be glad to mail you a copy of our new perennial catalog. You will find it an inspiration in renewing the perennial borders and beds that were perhaps neglected during the war. Illustrated in color.

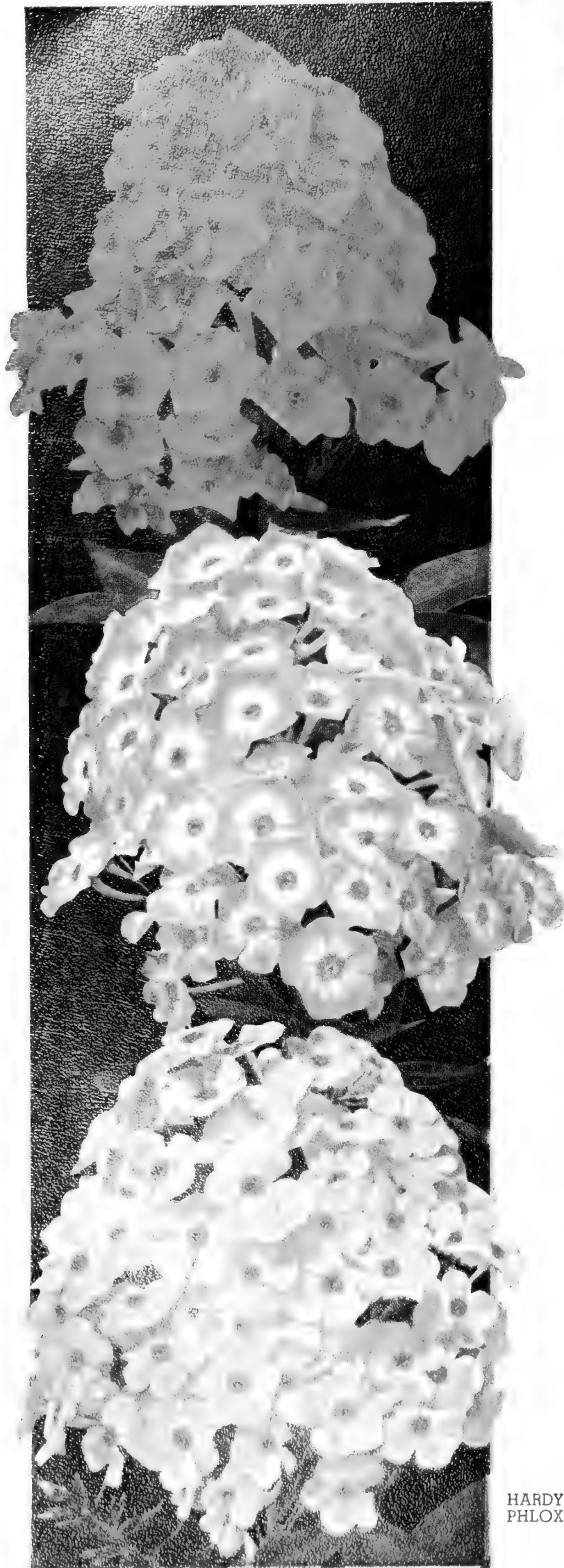


LARGE SIZE



REGULAR SIZE

PERENNIALS



HARDY
PHLOX



AQUILEGIA (Columbine)

AQUILEGIA (Columbine). For the early summer garden. Plant in sun or part shade in borders. Height 2 to 3 ft.
Chrysantha (Golden Columbine). Long-spurred yellow.
Crimson Star. Spurs and sepals rich crimson; petals white.
Long-Spurred Blue Shades Lovely shades of blue with white or creamy centers.
Long-Spurred Pink Shades. A choice strain in shades of pink.
Long-Spurred Snow Queen. A fine fragrant white.
Mrs Scott Elliott's Long-Spurred Hybrids. A delightful mixture mostly in soft shades, including many blues.

**All Aquilegias: 3 of one variety for \$1.50;
 10 of one variety for \$4.50**

DELPHINIUM (Hardy Larkspur). Wonderful tall accents for the border. Rich soil and a sunny location are needed.
Belladonna Improved. The freest and most continuous-blooming of all the Delphiniums. The clear turquoise-blue is not equaled for delicacy and beauty. June to Sept. 3 to 4 ft.
Bellamosum Improved. Rich deep blue form of the popular light blue Belladonna. June to Sept. 3 to 4 ft.
Blackmore & Langdon's English Hybrids Colors range from the palest of blue shades to the deepest indigo, with many delicate tones of rose; double and single. June to Sept. 5 ft.
Chinense, Blue Butterfly. A neat variety about a foot high with feathery foliage and large blooms of rich ultramarine-blue. A grand variety for the rockery or front of the border.

**All Delphiniums: 3 of one variety for \$1.35;
 10 of one variety for \$4.00**

HEMEROCALLIS (Daylilies). Easy growers in any location. Plants require plenty of space.
D. D. Wyman. Golden yellow with a brown splash across each petal. July, 2½ ft.
Dr. Regel. Handsome rich orange-yellow flowers in May and June; very fragrant. Fine for cutting. 1½ ft.
Flava (Lemon Lily). Sweet-scented; clear lemon-yellow. May, June. 3 ft.
Goldeni. Deep golden orange. June, July. 3 ft.
Gypsy. Large; reddish orange; broad petals. July, Aug. 3 ft.
Hyperion. Delightfully fragrant; citron-yellow. One of the finest pale yellows. July, early Aug. 4 ft. 75c each, 3 for \$2.00, 10 for \$6.00.
J. A. Crawford. Clear golden yellow. June, July. 4 ft.
Mrs. W. H. Wyman. Pale lemon-yellow flowers on 4-foot stems in Aug. Blends nicely with blue perennials. One of the latest to bloom. 4 ft.

Directions to Customers

ORDERING

We aim to execute orders as soon as received, but in the rush season slight delays are unavoidable, and when such is the case an acknowledgment will be sent at once. If you order early and give a shipping date, we will be pleased to ship so that the orders reach their destination on or about the date specified. When no shipping instructions are given, orders are filled in the rotation in which they are received.

TERMS

Those desiring to open accounts will please furnish references from three parties with whom they have had credit relations and allow sufficient time for us to investigate; otherwise cash must accompany order.

Remittances should be made by Post Office Money Orders, Drafts on New York or Philadelphia banks, or Express Money Orders, in amount sufficient to cover the complete order. Where it is impossible to obtain these, the letter should be registered. We cannot guarantee receipt of money sent in any other way. We reserve the right to decline C.O.D. orders.

No charge is made for boxes or packing, *except on shipments sent Parcel Post prepaid*, and the additional cost for packing and postage on these is covered by the additional 10, 15 and 20 per cent as per table of rates.

In filling out your order, always give shipping directions, and write *Name and Address distinctly* on each and every order.

SHIPPING

It is customary for our patrons to receive their orders from us in perfect condition. However, there are times when plants arrive slightly withered. When that happens, place only the roots in water, in order to revive them. Never set out a withered plant.

Claims for shortage, etc., must be made within five (5) days after receipt of goods.

HOW WE SHIP

All orders are forwarded by Express or Parcel Post, purchaser paying charges. For those of our customers who wish their orders sent prepaid, additional charges must be added for special packing and carrying charges. Rates as per states are listed hereon.

Express and Parcel Post Rates

10 per cent additional to the following states:

Connecticut
Delaware
District of Columbia
Indiana
Kentucky
Maine
Maryland
Massachusetts
New Hampshire
New Jersey
New York
North Carolina
Ohio
Pennsylvania
Rhode Island
Vermont
Virginia
West Virginia

15 per cent additional to the following states:

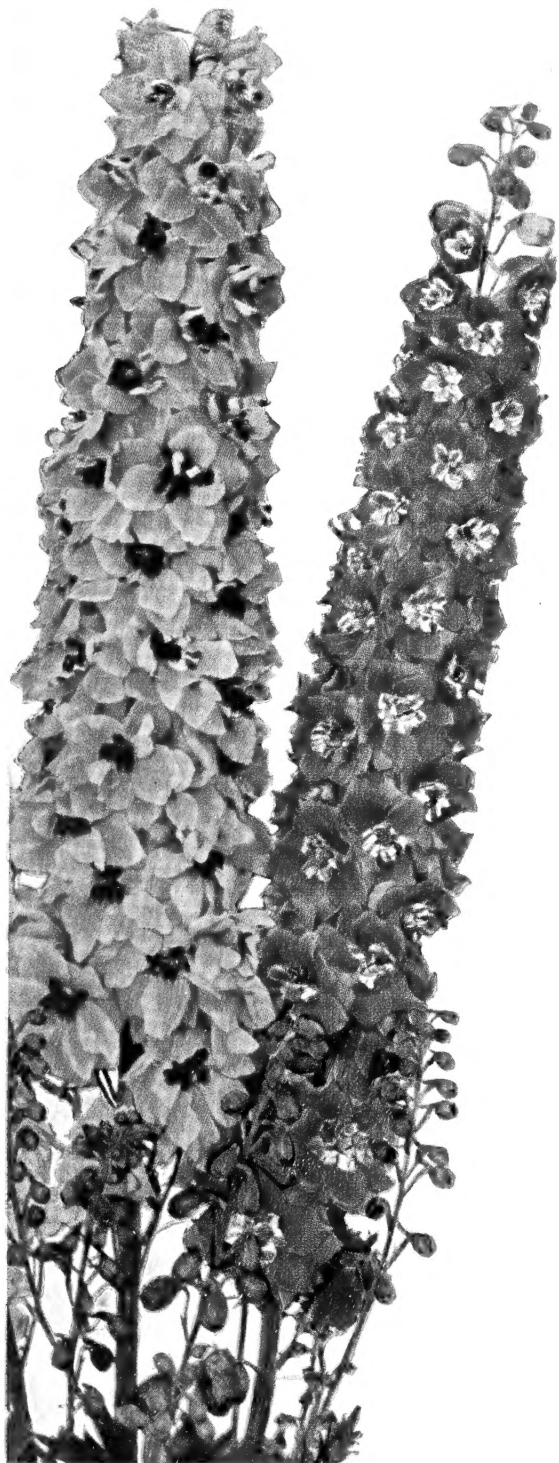
Alabama
Arkansas
Florida
Georgia
Illinois
Iowa
Michigan
Mississippi
Missouri
South Carolina
Tennessee
Wisconsin

20 per cent additional to the following states:

Kansas
Louisiana
Minnesota
Nebraska
North Dakota
Oklahoma
South Dakota
Texas

PITZONKA'S PANSY FARM • BRISTOL, PA.

— to Plant this Fall



DELPHINIUMS

Leo Schlageter. Vigorous, healthy grower with large, pyramidal clusters of bright scarlet-carmine overlaid with orange.

Mary Louise. Pure white heads of unusually large size. Largest blooms of all the white Phlox. Medium height.

Miss Lingard. Pearly white flower with delicate pink eye. Produces two or three crops of flowers during the season and is indispensable as a cut flower.

P. D. Williams. Large, soft apple-blossom-pink flowers with dark centers. Retains color until well into fall. 2½ ft.

Salmon Glow. Lively flame-pink, with salmon shades, softened with lilac and white tints at the center. 2½ ft.

**All Phlox: 3 of one variety for \$1.35,
10 of one variety for \$4.00**

ORIENTAL POPPIES

HEMEROCALLIS, Ophir. Waxy golden yellow flowers, 5 inches across and 6 inches long, on stems 4 to 5 feet high. One stem usually carries 25 or more successively opening, giant, heavy-textured and lasting flowers. July, Aug. 4½ ft.

Patricia. Pale yellow tinged lemon-chrome, with greenish throat. Large flowers with pronounced fragrance. Exceptionally resistant to hottest sun. June, July. 2½ ft. 75c each, 3 for \$2.00, 10 for \$6.00.

**All Hemerocallis, except where noted: 3 of one variety for \$1.35,
10 of one variety for \$4.00**

PAPAVER ORIENTALE (Oriental Poppy). Large, showy flowers in early summer on 2-foot plants. They need full sun and well-drained soil.

Beauty of Livermore. Dark crimson with black blotches.

Betty Ann. La France pink without any spots. Profuse bloom.

Cavalier. Strong grower and very free bloomer. Crinkly flowers of deep scarlet-red.

Gold of Ophir. Golden orange becoming almost yellow. Comes to perfection when two years old or more. 2 ft.

Helen Elizabeth. Light La France pink. The petals are deeply crinkled and without spots or blotches. Just the right shade to plant with light blue delphiniums.

Jeanne Mawson. Sparkling geranium-pink.

Joyce. Cherry-red flowers of medium size, on tall, straight stems. One of the best.

Red Flame. Dark scarlet. Fine large flowers on good strong stems. 75c each, 3 for \$2.00, 10 for \$6.00.

Salmon Glow. Double salmon-orange. The flowers are exceptionally large (fully 8 inches across). A strong, upright-growing prize-winner. 75c each, 3 for \$2.00, 10 for \$6.00.

Sass Pink. Large flowers of delicate flesh-pink with light gray-mauve center. One of the finest and largest pink Poppies. 75c each, 3 for \$2.00, 10 for \$6.00.

**All Poppies, except where noted: 3 of one variety for \$1.50,
10 of one variety for \$4.50**

PHLOX DECUSSATA (Hardy Phlox). Abundant bloom from early summer to frost. A standby for any hardy border. Adaptable to any soil.

Blue Boy. Very free flowering. Attractive deep blue flowers on low, bushy plants. 2 ft.

Border Queen. Enormous, compact trusses of pure pink. 20 in.

Daily Sketch. Both flower trusses and the individual florets are extra large. Light salmon-pink with a vivid crimson eye. Very vigorous. 3 ft.

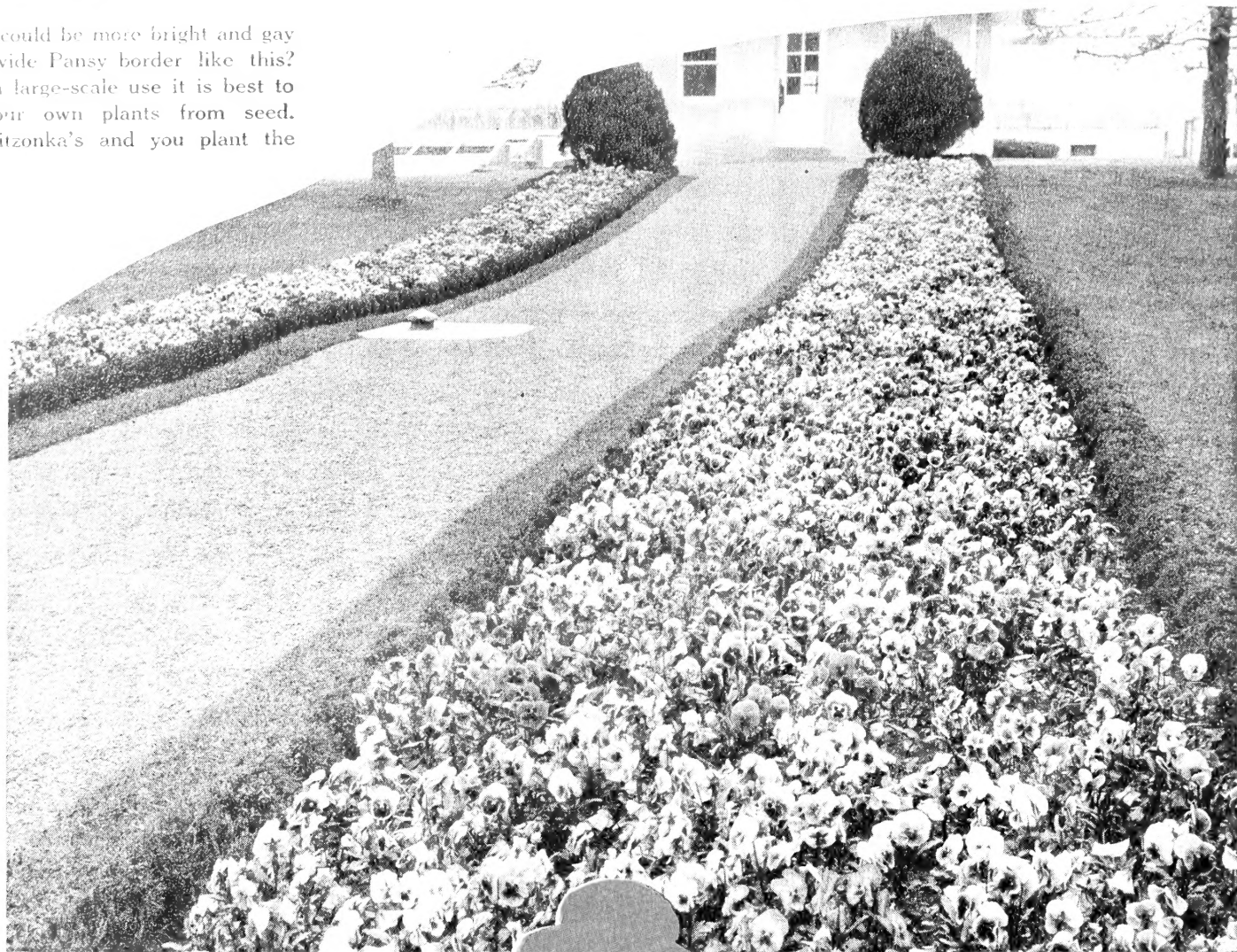
E. I. Farrington. Splendid heads of large, bright salmon-pink flowers, shading to soft pink. Strong, healthy, free-blooming plants.

Hauptmann Koehl. Dark blood-red; large clusters on strong, tall stems. 2½ ft.



PITZONKA'S *Giant-flowering* PANSIES

What could be more bright and gay than a wide Pansy border like this? For such large-scale use it is best to raise your own plants from seed. Plant Pitzonka's and you plant the best.



A BOWLFUL OF NAMED VARIETIES



PITZONKA'S PANSY FARM • Bristol, Penna.